

UK DEFENCE STATISTICS FACTSHEET 2009 EDITION



MINISTRY OF DEFENCE

Produced by Defence Analytical
Services & Advice



A NATIONAL STATISTICS PUBLICATION

Symbols

- } Categories merged for some years
- || Discontinuity in time series
- * Not applicable
- .. Not available
- p Provisional
- r Revised
- p r Revised but still provisional
- Nil or less than half the final value shown

Rounding

Individual figures in the tables are rounded and thus may not sum precisely to the totals shown.

Sources

The information given in this factsheet is based on the more detailed information given in the 2009 edition of UK Defence Statistics.

UK Defence Statistics is available on the World Wide Web at www.dasa.mod.uk.



CONTENTS

Numbering matches relevant tables in UKDS 2009

Finance

- F 1.2 Public Expenditure by Departmental Grouping
- F 1.3 Principal Headings of Defence Expenditure Outturn (Resource Basis)
- F 1.4 Estimated MOD Equipment Expenditure
- F 1.5 MOD Resources by Budgetary Areas
- F 1.8 MOD Research and Development Expenditure Outturn
- F 1.9 Estimated Defence Expenditure Outturn in the UK: Breakdown by Industry Group
- F 1.10 Estimated UK Employment Dependent on MOD Expenditure and Defence Exports
- F 1.13 Estimates of Identified Export Orders: Defence Equipment & Services
- F 1.15 Contracts Placed: By Type
- F 1.17 Organisations paid £50 million or more by the Ministry of Defence in 2008/09
- F 1.20 NATO Countries Defence Expenditure as % of GDP
- F 1.21 Top 15 Worldwide Military spenders 2009

Personnel

- F 2.1 Regular Service and Civilian Personnel Strength
- F 2.6 Strength of UK Regular Forces by rank
- F 2.7 Full Time Trained Strength and Requirement
- F 2.8 Ethnic Composition of Serving Members of the UK Regular Forces
- F 2.15 / 2.16 Strength of Reserve Forces and Cadets
- F 2.17 Intake of UK Regular Forces from Civil Life by Service
- F 2.21 Outflow from UK Regular Forces by Service
- F 2.17 / 2.21 Intake and Outflow of UK Regular Forces
- F 2.24 Indices and Illustrative Rates of Military Salary
- F 2.27 Civilian Personnel by Budgetary Area
- F 2.32 Intake and outflow of Civilian personnel

Health

- F 3.1 / 3.2 Deaths of UK Regulars and Gurkhas
- F 3.5 Suicides and Open Verdict deaths in the Armed Forces

Formations, Vessels, Aircraft and Vehicles of the Armed Forces

- F 4.5 Operational RN and Royal Fleet Auxiliary ships
- F 4.14 Tanks, Armoured Combat Vehicle and Artillery Holdings
- F 4.15 Attack Helicopters and Combat Aircraft Holdings

Search and Rescue

- F 5.1 / 5.2 Search and Rescue Operations by UK Military SAR units

Land Holdings and Buildings

- F 6.1 / 6.3 Land Holdings by type of use and parent service

F 1.2 Public Expenditure by Departmental Grouping

	Current Prices (£ billion)		
	Outturn 2006/07	Outturn 2007/08	Estimated Outturn 2008/09
Total Gov't Resource DEL	291.3	310.0	324.2
<i>Of which:</i>			
Children, Schools and Families	42.1	44.9	46.8
Health	80.4	88.4	92.5
<i>Of which: NHS England</i>	<i>78.5</i>	<i>86.4</i>	<i>90.9</i>
CLG Local Government	22.5	22.8	24.6
Home Office	8.3	8.6	8.9
Defence	33.5	35.7	37.9
Work and Pensions	7.9	8.1	8.1
Total Gov't Capital DEL	38.8	44.1	48.3
<i>Of which:</i>			
Children, Schools and Families	4.1	5.2	5.6
Health	3.2	3.8	4.6
<i>Of which: NHS England</i>	<i>3.1</i>	<i>3.6</i>	<i>4.4</i>
CLG Local Government	0.2	-	0.1
Home Office	0.6	0.7	0.9
Defence	7.1	7.9	8.6
Work and Pensions	0.2	0.1	0.1
Total Gov't AME	205.7	220.2	373.8
<i>Of which:</i>			
Children, Schools and Families	8.6	10.7	10.9
Health	10.5	10.8	13.9
<i>Of which: NHS England</i>	<i>0.3</i>	<i>0.6</i>	<i>0.6</i>
CLG Local Government	1.0	0.8	0.7
Home Office	0.3	0.4	0.4
Defence	0.6	0.5	0.2
Work and Pensions	119.3	127.4	135.7
Total Gov't DEL (RDEL + CDEL)	330.1	354.1	372.5
Total Gov't AME	205.7	220.2	373.8
Total Gov't Spend (RDEL + CDEL + AME)	535.8	574.3	746.3

F 1.3 Principal Headings of Defence Expenditure Outturn (Resource Basis)

Defence Spending	Inclusive of non-recoverable VAT at Current Prices (£ million)		
	Outturn 2006/07	Outturn 2007/08	Outturn 2008/09
Departmental Expenditure Limits	40 654	43 634	45 473
Resource DEL	33 457	35 689	36 715
<i>of which</i>			
Expenditure on Personnel	11 204	11 474	11 723
<i>of which:</i>			
for Armed Forces	8 423	8 646	8 937
for Civilians	2 781	2 828	2 786
Depreciation/Impairments	6 609	6 247	6 894
Cost of Capital	3 242	3 371	3 626
Equipment Support	3 793	4 272	4 292
Stock Consumption	1 140	1 071	1 181
Property Management	1 258	1 523	1 508
Movements	774	858	975
Accommodation & Utilities	786	750	866
Professional Fees	482	471	391
Fuel	416	537	695
Hospitality & Entertainment	4	4	4
PFI Service Charge	1 148	1 278	1 482
IT & Communications	719	655	852
Other Costs	1 882	3 180	2 226
Capital DEL	7 197	7 945	8 758
<i>of which:</i>			
Expenditure on Fixed Asset Categories			
Intangible Assets	1 744	1 756	1 311
Land and Buildings	45	126	163
Single Use Military Equipment	404	657	552
Plant, Machinery & Vehicles	32	36	30
IT & Communications Equipment	206	361	336
Assets Under Construction	5 099	5 450	6 515
Transport	33	55	239
Capital Spares	-	-	-
Capital Loan Repayment	-8	-10	-65
Capital Income	-358	-486	-323
AME	582	510	214
<i>of which:</i>			
War Pensions	1 038	1 014	1 000
Other	-456	-504	-785

F 1.9 Estimated Defence Expenditure Outturn in the UK: Breakdown by Industry Group

SIC(92) Section	VAT exclusive at Current Prices (£ million)		
	2006/07	2007/08	2008/09
Total	16 490	16 450	16 450
A, B, C	-	-	-
D	1 640	1 910	1 910
<i>Of which:</i>			
29.6 Weapons & Ammunition	1 080	900	900
30 Data Processing Equipment	50	40	40
31 Other Electrical Engineering	200	250	250
32 Electronics	1 000	950	950
33 Precision Instruments	600	530	530
34, 35.2 Motor Vehicles & Parts	300	320	320
35.1 Shipbuilding & Repairing	1 150	1 110	1 110
35.3 Aircraft & Spacecraft	1 960	2 100	2 100
E	280	200	200
<i>Of which:</i>			
Electricity, Gas & Water	280	200	200
F	1 380	1 270	1 270
<i>Of which:</i>			
Construction	1 380	1 270	1 270
G	230	280	280
<i>Of which:</i>			
Wholesale, Retail & Repair of Motor Vehicles	230	280	280
H, I	230	150	150
<i>Of which:</i>			
55 Hotels & Restaurants	230	150	150
60.1 Transport via railways	70	80	80
60.2, 60.3 Other Land Transport (incl. via pipelines)	20	40	40
61, 62, 63 Water, Air and Auxiliary/freight supply transportation	450	560	560
64 Post and Courier Services	10	10	10
64.2 Telecommunications	330	270	270
J, K, L, M, N, O, P	2 880	2 670	2 670
<i>Of which:</i>			
Financial Services, Business Activities, Education, Health, & Other Service Activities excluding those Industries Itemised below	2 880	2 670	2 670
70, 71 Real Estate & Renting	1 500	1 690	1 690
72 Computer Services	1 110	1 120	1 120

F 1.17 Organisations paid £50 million or more by the Ministry of Defence in 2008/09

Alphabetical Order	VAT exclusive at Current Prices (£ million)	
Over £500 million (7 Organisations)		
AWE Management Ltd	EDS Defence Ltd	Westland Helicopters Ltd
BAE Systems (Operations) Ltd	NETMA	
BVT Surface Fleet Ltd	QinetiQ Ltd	
£250 - £500 million (11 Organisations)		
BAE Systems Electronics Ltd	Debut Services Ltd	OCCAR-EA
BAE Systems Land Systems (Munitions & Ordnance) Ltd	Defence Science & Technology Laboratory	Paradigm Secure Communications Ltd
BAE Systems Land Systems (Weapons & Vehicles) Ltd	Devonport Royal Dockyard Ltd	Rolls-Royce Power Engineering PLC
British Telecommunications PLC	MBDA UK Ltd	
£100 - £250 million (29 Organisations)		
Amnington Receivables Ltd	Defence Support Group (DSG)	Raytheon Systems Ltd
Aspire Defence Ltd	General Dynamics United Kingdom Ltd	Reserve Forces and Cadets Associations
Babcock Support Services Ltd	Hess Energy Trading Company (UK) Ltd	Rolls-Royce PLC
BAE Systems Integrated System Technologies Ltd	Kellogg Brown & Root Ltd	Serco Ltd
BAE Systems Marine Ltd	Man Truck & Bus UK Ltd	Thales UK Ltd
Barclays Bank PLC	Marshall Of Cambridge Aerospace Ltd	The Boeing Company
BP Oil International Ltd	Meteorological Office	US Treasury
BVT Surface Fleet Support Ltd	Modern Housing Solutions (Prime) Ltd	VT Flagship Ltd
Carillion Enterprise Ltd	Pride (Serp) Ltd	VT Land (Whitefleet Management) Ltd
Defense Finance and Accounting Service Columbus	Purple Foodservice Solutions Ltd	
£50 - £100 million (38 Organisations)		
Air Partner PLC	IBM UK Ltd	Selex Sensors and Airborne Systems Ltd
Aviation Training International Ltd	Interserve (Defence) Ltd	Serco Denholm Marine Services Ltd
Babcock Dyncorp Ltd	Landmarc Support Services Ltd	SHAPE
Babcock Marine (Clyde) Ltd	Lockheed Martin Aerospace Systems Integration Corporation	Shell Marine Products Ltd
British Energy Direct Ltd	Lockheed Martin UK INSYS Ltd	Shell Defence Services Ltd
Cammell Laird Shiprepairers and Shipbuilders Ltd	Modus Services Ltd	SSE Energy Supply Ltd
Central Office of Information	Motor Oils (Hellas) Corinth Refineries SA (MOH)	Supreme Fuels GMBH and Co KG
Chapman Freeborn Airc chartering Ltd	NAMSA	Thales Air Defence Ltd
Europaeans SAS	NATO	Thales Optonics Ltd
FBS Ltd	Northrop Grumman Overseas Service Corporation	Turner Estate Solutions Ltd
Foreign and Commonwealth Office	NP Aerospace Ltd	Ultra Electronics Ltd
Fujitsu Services Ltd	RMPA Services PLC	United States Government
HCR Ltd	Rolls-Royce Turbomeca Ltd	

F 1.4 Estimated MOD Equipment Expenditure

	Inclusive of non-recoverable VAT at Current Prices (£ million)			
	2005/06	2006/07	2007/08	2008/09
Estimated MOD Equipment Expenditure	10 974	11 672	12 380	13 386
<i>Of which:</i>				
Capital Expenditure on Equipment	4 913	5 146	5 401	6 669
Equipment Support	3 542	3 793	4 272	4 292
Research & Development	2 519	2 732	2 707	2 426

F 1.10 Estimated UK Employment Dependent on MOD Expenditure and Defence Exports

	Thousands		
	2005/06	2006/07	2007/08
Total Employment	310	305	300
Direct	165	160	155
Indirect	145	145	145
Employment from MOD Expenditure	260	255	235
Direct	145	135	125
Indirect	120	115	110
<i>Split by:</i>			
Equipment Expenditure			
Direct	85	80	75
Indirect	75	75	75
Non-Equipment Expenditure			
Direct	60	55	50
Indirect	40	40	40
Employment from Defence Exports	50	55	65
Direct	25	25	30
Indirect	30	30	35

F 1.20 NATO Countries Defence Expenditure as % of GDP

Country	Constant 2000 Prices (% of GDP)		
	2006	2007	Estimated 2008
NATO - Total	2.9	2.8	2.8
NATO - Europe	1.8	1.7	1.7
Belgium	1.1	1.1	1.1
Bulgaria	2.8	3.0	2.6
Czech Republic	1.7	1.4	1.4
Denmark	1.4	1.3	1.3
Estonia	1.4	1.8	1.9
France	2.5	2.4	2.3
Germany	1.3	1.3	1.3
Greece	2.7	2.6	2.8
Hungary	1.2	1.3	1.2
Italy	1.4	1.1	1.1
Latvia	1.6	1.6	1.7
Lithuania	1.3	1.2	1.2
Luxembourg	0.6	0.6	0.4
Netherlands	1.5	1.5	1.4
Norway	1.6	1.6	1.5
Poland	1.8	1.8	1.9
Portugal	1.6	1.5	1.5
Romania	1.8	1.5	1.5
Slovak Republic	1.6	1.5	1.5
Slovenia	1.6	1.5	1.5
Spain	1.2	1.2	1.2
Turkey	2.1	1.7	1.7
United Kingdom	2.4	2.5	2.2
North America	3.7	3.7	3.7
Canada	1.2	1.3	1.3
United States	3.9	3.9	3.9

F 1.5 MOD Resources by Budgetary Areas

Departmental Expenditure Limits	Inclusive of non-recoverable VAT at Current Prices (£ million)		
	Outturn 2006/07	Outturn 2007/08	Outturn 2008/09
RIR 1: PROVISION OF DEFENCE CAPABILITY	38 858	40 602	41 382
Resource DEL plus Capital DEL	38 858	40 602	41 382
<i>of which:</i>			
Commander-in-Chief Fleet	2 162	2 214	2 202
General Officer Commanding (Northern Ireland)	391	-	-
Commander-in-Chief Land Forces	4 397	6 618	6 856
Air Officer Commanding-in-Chief RAF Strike Command	1 931	-	-
Commander-in-Chief Air Command	-	2 648	2 739
Chief of Joint Operations	395	509	492
Chief Defence Logistics	14 031	-	-

F 2.1 Service and Civilian Personnel Strength

1 April	Thousands: FTE			
	1997	2007	2008	2009
Total Personnel	348.5 293.8 P 282.6 P 281.4 P			
Service	215.1	196.1 P	193.1 P	194.7 P
UK Regulars	210.8	190.4 P	187.1 P	188.4 P
FTRS	-	1.6 P	1.8 P	2.1 P
Gurkhas	4.3	3.7 P	3.9 P	3.9 P
Locally Entered / Engaged		0.4	0.4	0.4
Civilian	133.3 97.7 89.5 86.6			
Level 1	101.9	73.8	69.0	66.4
Trading Funds	15.5	10.1	9.2	9.6
Locally Engaged	15.9	13.8	11.2	10.5
Royal Irish (Home Service)¹	4.8	2.1	*	*

1. Disbanded on 31 March 2008.

P denotes provisional. Due to ongoing validation of data from the Joint Personnel Administration System, Service strength statistics for 1 April 2007 onwards are provisional and subject to review.

F 2.6 Strength of UK Regular Forces by rank

1 April	Number			
	2006	2007	2008	2009
Officers	32 700	32 100 P	31 710 P	31 690 P
<i>by rank¹:</i>				
Major General and above	140	140 P	140 P	140 P
Brigadier	350	350 P	350 P	360 P
Colonel	1 200	1 190 P	1 180 P	1 220 P
Lieutenant Colonel	4 060	4 070 P	4 070 P	4 060 P
Major	9 950	9 760 P	9 600 P	9 540 P
Captain	12 290	12 120 P	11 900 P	11 770 P
Lieutenant and below	4 700	4 480 P	4 460 P	4 600 P
Other Ranks	163 150	158 290 P	155 340 P	156 680 P
<i>by rank¹:</i>				
Warrant Officer	9 410	9 150 P	9 080 P	9 140 P
Staff Sergeant	14 110	13 810 P	13 570 P	13 290 P
Sergeant	22 590	21 950 P	21 310 P	20 980 P
Corporal	31 710	30 650 P	30 300 P	29 600 P
Lance Corporal	16 350	16 560 P	16 700 P	16 410 P
Private (including juniors)	68 980	66 160 P	64 390 P	67 250 P

1. Figures are for paid rank. Includes equivalent ranks for the Naval Service and RAF.

F 2.7 Full Time Trained Strength and Requirement

1 April	Number			
	2006	2007	2008	2009
All Services	185 920	183 610	179 270	178 860
Requirement	185 920	183 610	179 270	178 860
Strength	183 180	177 820 P	173 960 P	173 920 P
Surplus/deficit	-2 750	-5 790 P	-5 310 P	-4 940 P
as % of requirement	-1.5	-3.2 P	-3.0 P	-2.8 P
Naval service				
Requirement	36 830	36 800	36 260	35 760
Strength	35 620	34 920 P	35 070 P	35 020 P
Surplus/deficit	-1 220	-1 880	-1 190 P	-740 P
as % of requirement	-3.3	-5.1	-3.3 P	-2.1 P
Army				
Requirement	101 800	101 800	101 800	101 790
Strength	100 620	99 350 P	98 270 P	99 250 P
Surplus/deficit	-1 180	-2 450 P	-3 530 P	-2 540 P
as % of requirement	-1.2	-2.4 P	-3.5 P	-2.5 P
RAF				
Requirement	47 290	45 020	41 210	41 310
Strength	46 940	43 550	40 620 P	39 660 P
Surplus/deficit	-350	-1 460	-590 P	-1 660 P
as % of requirement	-0.7	-3.2	-1.4 P	-4.0 P

Full-time strengths include UK Regulars, Trained Gurkhas and FTRS.

F 2.8 Ethnic Composition of Serving Members of the UK Regular Forces

1 April 2009	Percentage ¹		Thousands
	White	Ethnic Minority	Total
All Services	87.4 P	6.5 P	188.4 P
Officers	89.2 P	2.5 P	31.7 P
Other ranks	87.0 P	7.2 P	156.7 P
Naval Service	92.0 P	3.3 P	38.3 P
Officers	94.1 P	1.6 P	7.4 P
Other ranks	91.5 P	3.7 P	30.9 P
Army	84.4 P	9.4 P	106.5 P
Officers	88.4 P	3.0 P	14.5 P
Other ranks	83.8 P	10.4 P	92.0 P
RAF	90.6 P	2.2 P	43.6 P
Officers	86.6 P	2.6 P	9.8 P
Other ranks	91.8 P	2.0 P	33.8 P

1. Percentages are calculated from unrounded data and only includes personnel with known ethnic origin.

F 2.15/2.16 Strength of Reserve Forces and Cadets

1 April	Thousands			
	1997	2007	2008	2009
All Services	322.1
Regular Reserves	259.4
Volunteer Reserves	62.6	..	39.2 P	39.8 P
Naval Service	27.7	..	22.5	..
Regular Reserves	24.1	..	19.6	..
Volunteer Reserves	3.6	..	2.9	3.0
Army	247.8	158.6
Regular Reserves	190.1	121.8
Volunteer Reserves	57.7	36.8	35.0 P	35.4 P
Royal Air Force	46.7	34.6 P
Regular Reserves	45.3	33.4 P
Volunteer Reserves	1.4	1.3 P	1.3 P	1.4 P
All Services Cadets	127.5	..	127.6	130.0

The cadet figures for each service include both single service cadet forces and an element of the Combined Cadet Force. Figures exclude officers, training and administrative staff except for Naval Service figures before 1993 where separate figures are not available.

F 2.17 Intake to UK Regular Forces from Civil Life by Service

1 April	Number			
	05/06	06/07	07/08	08/09
All Services	18 150	19 790 P	21 330 P	22 770 P
Officers	1 520	1 580 P	1 740 P	1 500 P
Other Ranks	16 630	18 210 P	19 590 P	21 260 P
Naval Service	3 940	3 770 P	3 860 P	4 000 P
Officers	370	320 P	290 P	210 P
of which marines:	50	50 P	30 P	30 P
Other Ranks	3 570	3 450 P	3 580 P	3 800 P
of which marines:	1 190	1 080 P	1 080 P	1 210 P
Army	12 730	14 300 P	14 540 P	14 510 P
Officers	820	900 P	1 060 P	890 P
Other Ranks	11 910	13 400 P	13 480 P	13 620 P
RAF	1 480	1 720	2 930 P	4 260 P
Officers	330	370	390 P	410 P
Other Ranks	1 150	1 360	2 540 P	3 840 P

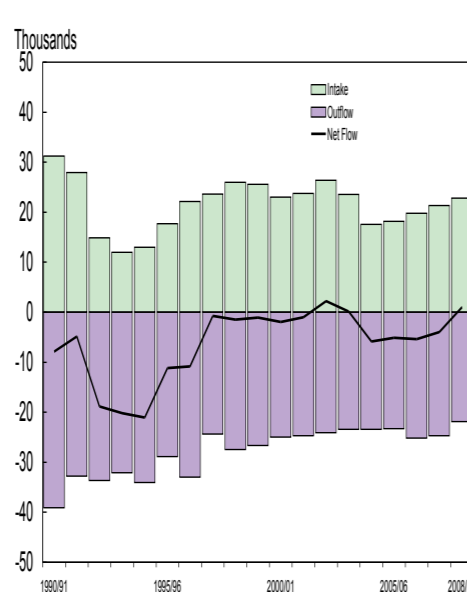
Due to ongoing validation of data from the Joint Personnel Administration System, all Naval Service and Army flow statistics for financial year 06/07 onwards and all RAF flow statistics for financial year 07/08 onwards are provisional and subject to review.

F 2.21 Outflow from UK Regular Forces by Service

1 April	Number			
	97/98	06/07	07/08	08/09
All Services	24 350	25 160 P	24 690 P	21 880 P
Officers	2 280	2 680 P	2 820 P	2 440 P
Other Ranks	22 070	22 480 P	21 860 P	19 450 P
Naval Service	5 270	4 320 P	4 340 P	4 430 P
Officers	620	500 P	580 P	520 P
Other Ranks	4 650	3 820 P	3 760 P	3 910 P
Army	14 470	15 770 P	15 330 P	13 140 P
Officers	1 040	1 330 P	1 490 P	1 270 P
Other Ranks	13 430	14 440 P	13 830 P	11 870 P
RAF	4 610	5 070	5 020 P	4 320 P
Officers	620	850	760 P	640 P
Other Ranks	3 990	4 220	4 270 P	3 670 P

Due to ongoing validation of data from the Joint Personnel Administration System, all Naval Service and Army flow statistics for financial year 06/07 onwards and all RAF flow statistics for financial year 07/08 onwards are provisional and subject to review.

F 2.17 / 2.21 Intake and Outflow of UK Regular Forces



F 2.24 Indices and Illustrative Rates of UK Regular Forces Salary

(1990/91)=100	07/08			08/09			09/10		
	UK Regular Forces salaries Index ¹ :								
M. General and above	214	221	234						
Brigadier and below	208	217	223						
Sergeant and above	219	227	233						
Corporal and below	212	219	226						
Illustrative rates									
General	160,625	164,159	172,130						
Brigadier	89,444	96,288	98,984						
Colonel	71,522	77,545	79,716						
Lieutenant Colonel	68,273	74,023	76,095						
Major	52,702	54,551	56,078						
Captain	36,817	38,109	39,176						
Lieutenant	28,698	29,704	30,536						
2nd Lieutenant	22,680	23,475	24,113						
Warrant Officer I	43,077	44,588	45,836						
Warrant Officer II	39,851	41,249	42,404						
Staff Sergeant	35,248	36,484	37,506						
Sergeant	34,025	35,219	36,205						
Corporal	30,573	31,646	32,532						
Lance Corporal	26,664	27,599	28,372						
Private	15,677	16,227	16,681						

1. Indices are based on average daily rates of pay during the year. All indices are calculated using standard rank weights taken at 1 March 2008.

F 2.27 Civilian personnel¹ by Budgetary Area

1 April 2009	Thousands: FTE	
	Non-Industrial	Industrial
Navy	4.1	0.5
Fleet	1.8	0.5
Royal Fleet Auxiliary Service ²	2.3	-
Army	11.9	4.6
Land Forces	11.9	4.6
Air	5.7	2.8
HQ Air Command	5.7	2.8
Defence Equipment and Support	14.3	2.4
Defence Equipment and Support	14.3	2.4
MOD Headquarters	19.2	0.7
Central	16.0	0.6
Chief of Joint Operations	0.3	-
Science Innovation and Technology	0.4	-
Defence Estates	2.6	0.1
Trading Funds²	9.6	-
DSTL	3.5	-
Meteorological Office	1.9	-
UK Hydrographic Office	1.0	-
Defence Support Group	3.4	-
Unallocated	0.1	-
Unallocated	0.1	-

1. Excludes Locally Engaged Civilians
2. Industrial and non-industrial staff cannot be distinguished for Trading Funds and RFA. All staff are shown here under Non-Industrial.

F 3.5 Suicide and Open Verdict deaths in the UK Armed Forces 1984 - 2008

All Services	Verdict	Total		
		Male	Female	
Suicide	550	537	13	
Open	168	163	5	
Awaiting	28	26	2	
Naval Service				
Suicide	83	81	2	
Open	37	36	1	
Awaiting	2	2	-	
Army				
Suicide	341	335	6	
Open	96	92	4	
Awaiting	24	23	1	
RAF				
Suicide	126	121	5	
Open	35	35	-	
Awaiting	2	1	1	

Data presented here include all trained and untrained regular personnel (including Gurkhas) and any non-regulars who died whilst on deployment.

F 4.5 Operational Royal Navy and Royal Fleet Auxiliary ships

1 April 2009	Operational			Total
	Operational	Undergoing Refit		
Royal Navy ships				
Aircraft Carriers	1	1	2	
Landing Platform Dock	1	1	2	
Landing Platform Helicopter	1	-	1	
Destroyers				
Type 42	6	1	7	
Frigates				
Type 23	6	1	7	
Devonport	6	-	6	
Portsmouth	2	2	4	
Type 22	2	2	4	
Offshore patrol				