

# UK DEFENCE STATISTICS FACTSHEET 2008 EDITION



MINISTRY OF DEFENCE

Produced by Defence Analytical  
Services & Advice



## F 1.2 Public Expenditure by Departmental Grouping

	Current Prices (£ billion)		
	2005/06 Outturn	2006/07 Outturn	2007/08 Estimated Outturn
<b>Total Resource DEL</b>	<b>277.6</b>	<b>291.2</b>	<b>313.1</b>
<i>Of which:</i>			
Children, Schools and Families	14.3	42.1	44.9
Health	76.4	80.4	89.2
<i>Of which: NHS England</i>	74.2	78.5	87.1
CLG Local Government	46.2	22.5	22.7
Home Office	8.3	8.3	8.7
Defence	33.5	33.5	36.7
Work and Pensions	8.0	7.9	8.1
<b>Total Capital DEL</b>	<b>35.2</b>	<b>38.9</b>	<b>43.9</b>
<i>Of which:</i>			
Children, Schools and Families	4.4	4.1	5.5
Health	2.2	3.2	3.6
<i>Of which: NHS England</i>	2.2	3.1	3.3
CLG Local Government	0.3	0.2	0.1
Home Office	0.6	0.6	0.8
Defence	6.4	7.1	8.1
Work and Pensions	0.4	0.2	0.1
<b>Total AME</b>	<b>187.5</b>	<b>206.3</b>	<b>221.2</b>
<i>Of which:</i>			
Children, Schools and Families	8.0	8.6	10.7
Health	10.1	10.5	14.6
<i>Of which: NHS England</i>	0.8	0.3	0.6
CLG Local Government	0.5	1.0	0.9
Home Office	-	0.3	0.4
Defence	0.9	0.6	0.5
Work and Pensions	115.2	119.3	129.6
<b>Total Gov't DEL (RDEL + CDEL)</b>	<b>312.8</b>	<b>330.0</b>	<b>357.1</b>
<b>Total Gov't AME</b>	<b>187.5</b>	<b>206.3</b>	<b>221.2</b>
<b>Total Gov't Spend (RDEL + CDEL + AME)</b>	<b>500.3</b>	<b>536.3</b>	<b>578.2</b>

## F 1.3 Principal Headings of Defence Expenditure Outturn (Resource Basis)

Defence Spending	Inclusive of Non-Recoverable VAT at Current Prices (£ million)		
	Outturn 2005/06	Outturn 2006/07	Outturn 2007/08
<b>Departmental Expenditure Limits</b>	<b>39 751</b>	<b>40 654</b>	<b>43 654</b>
<b>Resource DEL</b>	<b>32 911</b>	<b>33 457</b>	<b>35 709</b>
<i>Expenditure on Personnel</i>	11 255	11 204	11 485
<i>of which:</i>			
for Armed Forces	8 263	8 423	8 649
for Civilians	2 992	2 781	2 836
Depreciation/Impairments	6 587	6 609	6 247
Cost of Capital	3 106	3 242	3 371
Equipment Support	3 542	3 793	4 272
Stock Consumption	1 039	1 140	1 071
Property Management	1 367	1 258	1 523
Movements	729	774	858
Accommodation & Utilities	735	786	750
Professional Fees	553	482	471
Fuel	369	416	537
Hospitality & Entertainment	5	4	4
PFI Service Charge	870	1 148	1 276
IT & Communications	643	719	855
Other Costs	2 111	1 882	3 189
<b>Capital DEL</b>	<b>6 840</b>	<b>7 197</b>	<b>7 945</b>
<i>of which:</i>			
Expenditure on Fixed Asset Categories			
Intangible Assets	1 550	1 744	1 756
Land and Buildings	31	45	126
Single Use Military Equipment	402	404	657
Plant, Machinery & Vehicles	64	32	35
IT & Communications Equipment	190	206	261
Assets Under Construction	4 879	5 099	5 450
Transport	13	33	55
Capital Spares	-	-	-
Capital Loan Repayment	- 53	- 8	- 10
Capital Income	- 225	- 358	- 486
<b>AME</b>	<b>890</b>	<b>582</b>	<b>910</b>
<i>of which:</i>			
War Pensions	1 067	1 038	1 014
Other	- 177	- 456	- 504

## F 1.4 Estimated MOD Equipment Expenditure

	Inclusive of non-recoverable VAT at Current Prices (£ million)			
	2004/05	2005/06	2006/07	2007/08
<b>Estimated MOD Equipment Expenditure</b>	<b>10 754</b>	<b>10 974</b>	<b>11 672</b>	<b>12 380</b>
<i>Of which:</i>				
Capital Expenditure on Equipment	4 555	4 913	5 146	5 401
Equipment Support	3 623	3 542	3 793	4 272
Research & Development	2 576	2 519	2 732	2 707

## F 1.5 MOD Resources by Budgetary Areas

Departmental Expenditure Limits	Inclusive of Non-Recoverable VAT at Current Prices (£ million)		
	2005/06 Outturn	2006/07 Outturn	2007/08 Outturn
<b>RIR 1: PROVISION OF DEFENCE CAPABILITY</b>	<b>38 484</b>	<b>38 858</b>	<b>40 622</b>
Resource DEL plus Capital DEL	38 484	38 858	40 622
<i>of which:</i>			
Commander-in-Chief Fleet	3 555	2 162	2 214
General Officer Commanding (Northern Ireland)	584	391	-
Commander-in-Chief Land Command	5 679	4 397	6 618
Air Officer Commanding-in-Chief RAF Strike Command	4 053	1 931	-
Commander-in-Chief Air Command	-	-	2 648
Chief of Joint Operations	589	395	509
Chief Defence Logistics	8 633	14 031	-
Defence Equipment & Support	-	-	22 897
2nd Sea Lord/Commander-in-Chief Naval Home Command	789	-	-
Adjutant General (Personnel and Training Command)	1 941	1 591	-
Air Officer Commanding-in-Chief RAF Personnel and Training Command	917	773	-
Central	2 414	2 216	2 358
Defence Estates	1 330	2 832	2 836
Defence Procurement Agency	7 488	7 615	-
Science Innovation Technology	502	524	542
<b>RIR 2: CONFLICT PREVENTION</b>	<b>1 256</b>	<b>1 796</b>	<b>3 032</b>
(not broken down by Top Level Budget)			
Resource DEL	1 055	1 448	2 196
Capital DEL	211	348	836
<b>RIR 3: WAR PENSIONS &amp; ALLOWANCES, etc</b>	<b>-</b>	<b>-</b>	<b>-</b>
<b>Annually Managed Expenditure</b>	<b>890</b>	<b>582</b>	<b>610</b>
RIR 1: PROVISION OF DEFENCE CAPABILITY	-177	- 456	- 504
RIR 2: CONFLICT PREVENTION	-	-	-
RIR 3: WAR PENSIONS & ALLOWANCES, etc	1 067	1 038	1 014

## A NATIONAL STATISTICS PUBLICATION

Symbols

- } Categories merged for some years
- || Discontinuity in time series
- \* Not applicable
- .. Not available
- p Provisional
- r Revised
- Nil or less than half the final value shown

Rounding

Individual figures in the tables are rounded and thus may not sum precisely to the totals shown.

Sources

The information given in this factsheet is based on the more detailed information given in the 2008 edition of the UK Defence Statistics.

Copies of UK Defence Statistics are available to the public from the Stationery Office, and to all MOD staff from CS(Establishment).

UK Defence Statistics is also available on the World Wide Web at <http://www.dasa.mod.uk>



## CONTENTS

Numbering matches relevant tables in UKDS 2008

### Finance

F 1.2	Public Expenditure by Departmental Grouping
F 1.3	Principal Headings of Defence Expenditure Outturn (Resource Basis)
F 1.4	Estimated MOD Equipment Expenditure
F 1.5	MOD Resources by Budgetary Areas
F 1.8	MOD Research and Development Expenditure Outturn
F 1.9a	Estimated Defence Expenditure Outturn in the UK: Breakdown by Industry Group
F 1.10	Estimated UK Employment Dependent on MOD Expenditure and Defence Exports
F 1.13	Estimated Imports and Exports of Defence Equipment and Services
F 1.16	Contracts Placed: By Type
F 1.18	Organisations paid £50 million or more by the Ministry of Defence in 2007/08
F 1.21	NATO Countries Defence Expenditure as % of GDP

### Personnel

F 2.1	Regular Service and Civilian Personnel Strength
F 2.2	Civilian personnel by Budgetary Area
F 2.8	Strength of UK Regular Forces by rank, at 1 April each year
F 2.9	Full Time Trained Strength and Requirement
F 2.10	Ethnic Composition of Serving Members of the UK Regular Forces
F 2.17 / 2.18	Strength of Reserve Forces and Cadets
F 2.19	Intake of UK Regular Forces from Civil Life by Service
F 2.19 / 2.23	Intake and Outflow of UK Regular Forces
F 2.25	Outflow of trained UK Regular Forces by reason
F 2.27	Indices and Illustrative Rates of Military Salary
F 2.33	Intake and outflow of Civilian personnel

### Health

F 3.1 / 3.2	Deaths of UK Regulars and Gurkhas
F 4.5	Operational RN and Royal Fleet Auxiliary ships

### Formations, Vessels, Aircraft and Vehicles of the Armed Forces

F 4.14	Tanks, Armoured Combat Vehicle and Artillery Holdings
F 4.15	Attack Helicopters and Combat Aircraft Holdings

### Search and Rescue

F 5.1 / 5.2	Search and Rescue Operations by UK Military SAR units
-------------	---

### Land Holdings and Buildings

F 6.1 / 6.3	Land Holdings by type of use and parent service
-------------	---

### Northern Ireland and Military Aid to the Community

F 7.1 / 7.3 / 7.4	Armed Forces and Security in Northern Ireland
-------------------	---

## F 1.8 MOD Research and Development Expenditure Outturn

Research & Development	Inclusive of Non-Recoverable VAT at Current Prices (£ million)		
	2004/05	2005/06	2006/07
<b>Total Gross Expenditure on R&amp;D</b>	<b>2 645</b>	<b>2 594</b>	<b>..</b>
<i>Of which:</i>			
Intramural	357	365	..
Extramural	2 288	2 229	..
<b>Receipts</b>	<b>69</b>	<b>75</b>	<b>..</b>
<i>Of which used:</i>			
Intramurally	61	74	..
Extramurally	8	1	..
<b>Total Net Expenditure on R&amp;D</b>	<b>2 576</b>	<b>2 519</b>	<b>..</b>
<b>Research</b>	<b>2004/05</b>	<b>2005/06</b>	<b>2006/07</b>
<b>Total Gross Expenditure on Research</b>	<b>664</b>	<b>626</b>	<b>..</b>
<i>Of which:</i>			
Intramural	190	171	..
Extramural	474	455	..
<b>Receipts</b>	<b>26</b>	<b>28</b>	<b>..</b>
<i>Of which used:</i>			
Intramurally	25	27	..
Extramurally	1	1	..
<b>Total Net Expenditure on Research</b>	<b>639</b>	<b>598</b>	<b>..</b>
<b>Development</b>	<b>2004/05</b>	<b>2005/06</b>	<b>2006/07</b>
<b>Total Gross Expenditure on Development</b>	<b>1 981</b>	<b>1 969</b>	<b>..</b>
<i>Of which:</i>			
Intramural	167	194	..
Extramural	1 814	1 775	..
<b>Receipts</b>	<b>43</b>	<b>47</b>	<b>..</b>
<i>Of which used:</i>			
Intramurally	36	47	..
Extramurally	8	-	..
<b>Total Net Expenditure on Development</b>	<b>1 937</b>	<b>1 921</b>	<b>..</b>

## F1.16 Contracts Placed: By Type

	Current Prices (£ million)/Percentage		
	2005/06	2006/07	2007/08
<b>Total Value of MOD HQ Contracts Placed</b>	<b>18 242</b>	<b>28 148</b>	<b>14 388</b>
Percentage of Total Value:			
Contracts Priced by Competition	51	62	36
Contracts Priced by Reference to Market Forces	7	7	11
Contracts Priced on Estimates at Outset or as soon as possible thereafter	35	22	29
Contracts Priced on Actual Costs with Incentives to Minimise Cost	7	9	24
Contracts Priced on Actual Costs plus a % Fee	-	-	-
<b>Total Number of MOD HQ Contracts Placed</b>	<b>25 865</b>	<b>22 712</b>	<b>22 910</b>
Percentage of Total Number:			
Contracts Priced by Competition	41	41	40
Contracts Priced by Reference to Market Forces	33	31	31
Contracts Priced on Estimates at Outset or as soon as possible thereafter	24	27	26
Contracts Priced on Actual Costs with Incentives to Minimise Cost	2	1	3
Contracts Priced on Actual Costs plus a % Fee	-	-	-

## F 1.9a Estimated Defence Expenditure Outturn in the UK: Breakdown by Industry Group

SIC(92) Section	VAT Exclusive at Current Prices (£ million)	
	2005/06	2006/07
<b>Total</b>	<b>16 030</b>	<b>16 490</b>
A, B, C	-	-
D	1 740	1 640
E	260	280
F	1 310	1 380
G	180	230
H, I	250	230
J, K, L, M, N, O, P	2 800	2 880
70, 71	1 460	1 500
72	930	1 110

## F1.18 Organisations paid £50 million or more by the Ministry of Defence in 2007/08

Alphabetical Order	VAT exclusive at Current Prices (£ million)	
<b>Over £500 million (5 Organisations)</b>		
AWE Management Ltd	EDS Defence Ltd	Westland Helicopters Ltd
BAE Systems (Operations) Ltd	QinetiQ Ltd	
<b>£250 - £500 million (10 Organisations)</b>		
BAE Systems Electronics Ltd	British Telecommunications PLC	Devonport Royal Dockyard Ltd
BAE Systems Land Systems (Munitions & Ordnance) Ltd	Debut Services Ltd	NETMA
BAE Systems Land Systems (Weapons & Vehicles) Ltd	Defence Science & Technology Laboratory	Rolls Royce Power Engineering PLC
BAE Systems Surface Fleet Solutions		
<b>£100 - £250 million (26 Organisations)</b>		
AMEC Turner Ltd	General Dynamics United Kingdom Ltd	Purple Foodservice Solutions Ltd
Aspire Defence Ltd	Kellogg Brown & Root Ltd	Raytheon Systems Ltd
Babcock Support Services Ltd	Man Truck & Bus UK Ltd	Rolls-Royce PLC
BAE Systems Integrated System Technologies Ltd	Marshall Of Cambridge Aerospace Ltd	Serco Ltd
Carillion Enterprise Ltd	MBDA UK Ltd	Thales Air Defence Ltd
Defence Support Group (DSG)	Meteorological Office	Thales UK Ltd
Europamaas SAS	Modern Housing Solutions (Prime) Ltd	The Boeing Company
Flagship Training Ltd	Paradigm Secure Communications Ltd	VT Land (Whitefleet Management) Ltd
Fleet Support Ltd	Pride (Serp) Ltd	
<b>£50 - £100 million (25 Organisations)</b>		
Aviation Training International Ltd	IBM UK Ltd	Royal & Sun Alliance Insurance PLC
Babcock Dyncorp Ltd	Landmarc Support Services Ltd	Selex Sensors and Airborne Systems Ltd
Babcock Marine (Clyde) Ltd	Lockheed Martin UK INSYS Ltd	
BAE Systems Marine Ltd	McDonnell Douglas Corporation	Shell Marine Products Ltd
BP International Ltd	Modus Services Ltd	Sodexho Defence Services Ltd
British Energy Direct Ltd	Northrop Grumman Overseas Service Corporation	Thales Naval Ltd
CEPSA	NP Aerospace Ltd	

## F 2.1 Service and Civilian Personnel Strength

	Thousands: FTE			
1 April	1997	2006	2007	2008
<b>Total personnel</b>	<b>348.5</b> <sup>II</sup>	<b>304.8</b> <sup>r</sup>	<b>293.8</b> <sup>PP</sup>	<b>282.6</b> <sup>P</sup>
<b>Service</b>	<b>215.1</b>	<b>201.4</b>	<b>196.1</b> <sup>P</sup>	<b>193.1</b> <sup>P</sup>
UK Regulars	210.8	195.9	190.4 <sup>P</sup>	187.1 <sup>P</sup>
FTRS	-	1.5	1.6 <sup>P</sup>	1.8 <sup>P</sup>
Gurkhas	4.3	3.7	3.7 <sup>P</sup>	3.9 <sup>P</sup>
Locally entered /engaged		0.4	0.4	0.4
<b>Civilian</b>	<b>133.3</b> <sup>II</sup>	<b>103.4</b> <sup>r</sup>	<b>97.7</b> <sup>r</sup>	<b>89.5</b>
Level 1	101.9 <sup>II</sup>	78.1	73.8	69.0
Trading Funds	15.5 <sup>II</sup>	10.7	10.1	9.2
Locally entered /engaged	15.9 <sup>II</sup>	14.5 <sup>r</sup>	13.8 <sup>r</sup>	11.2
<b>Royal Irish (Home Service)<sup>1</sup></b>	<b>4.8</b>	<b>3.1</b>	<b>2.1</b>	<b>-</b>

1. Disbanded 31 March 2008.

p denotes provisional. Due to ongoing validation of data from the Joint Personnel Administration System, Service strength statistics for 1 April 2007 and 1 April 2008 and Service flow statistics for financial year 06/07 and 07/08 are provisional and subject to review.

## F 2.2 Civilian personnel<sup>1</sup> by Budgetary Area

	Thousands: FTE	
1 April 2008	Non-industrial	Industrial
<b>Navy excluding RFAs</b>	<b>1.8</b>	<b>0.5</b>
Fleet	1.8	0.5
<b>Army</b>	<b>12.2</b>	<b>5.0</b>
CinC Land Forces	12.2	5.0
<b>Air</b>	<b>5.7</b>	<b>3.0</b>
HQ Air Command	5.7	3.0
<b>Defence Equipment &amp; Support</b>	<b>15.2</b>	<b>2.8</b>
Defence Equipment & Support	15.2	2.8
<b>MOD Headquarters</b>	<b>19.6</b>	<b>0.7</b>
Central	16.4	0.5
Chief of Joint Operations	0.3	-
Science Innovation and Technology	0.3	-
Defence Estates	2.6	0.1
<b>Trading Funds<sup>2</sup></b>	<b>9.2</b>	<b>-</b>
DSTL	3.3	-
Meteorological Office	1.7	-
UK Hydrographic Office	1.0	-
Defence Support Group	3.1	-
<b>Unallocated</b>	<b>0.2</b>	<b>0.1</b>
Unallocated	0.2	0.1

1. Excludes locally engaged civilians and Royal Fleet Auxiliary.

2. Industrial and non-industrial staff cannot be identified for Trading Funds. All staff are shown here under non-industrial.

## F 2.8 Strength of UK Regular Forces by rank

	Number			
1 April	2005	2006	2007	2008
<b>Officers</b>	<b>33 000</b>	<b>32 700</b>	<b>32 100</b> <sup>P</sup>	<b>31 710</b> <sup>P</sup>
<i>by rank<sup>1</sup>:</i>				
Major General and above	150	140	140 <sup>P</sup>	140 <sup>P</sup>
Brigadier	350	350	350 <sup>P</sup>	350 <sup>P</sup>
Colonel	1 210	1 200	1 190 <sup>P</sup>	1 180 <sup>P</sup>
Lieutenant Colonel	4 130	4 060	4 070 <sup>P</sup>	4 070 <sup>P</sup>
Major	10 010	9 950	9 760 <sup>P</sup>	9 600 <sup>P</sup>
Captain	12 310	12 290	12 120 <sup>P</sup>	11 900 <sup>P</sup>
Lieutenant and below	4 840	4 700	4 480 <sup>P</sup>	4 460 <sup>P</sup>
<b>Other Ranks</b>	<b>168 090</b>	<b>163 150</b>	<b>158 290</b> <sup>P</sup>	<b>155 340</b> <sup>P</sup>
<i>by rank<sup>2</sup>:</i>				
Warrant Officer	9 540	9 410	9 150 <sup>P</sup>	9 080 <sup>P</sup>
Staff Sergeant	14 470	14 110	13 810 <sup>P</sup>	13 570 <sup>P</sup>
Sergeant	22 920	22 590	21 950 <sup>P</sup>	21 310 <sup>P</sup>
Corporal	32 510	31 710	30 650 <sup>P</sup>	30 300 <sup>P</sup>
Lance Corporal	16 410	16 350	16 560 <sup>P</sup>	16 700 <sup>P</sup>
Private (including juniors)	72 250	68 980	66 160 <sup>P</sup>	64 390 <sup>P</sup>

1. Figures are for paid rank. Includes equivalent ranks for the Naval Service and RAF.

## F 2.9 Full Time Trained Strength and Requirement

	Number			
1 April	2005	2006	2007	2008
<b>All Services</b>				
Requirement	191 090	185 920	183 610	179 270
Strength	188 050	183 180	177 820 <sup>P</sup>	173 960 <sup>P</sup>
Surplus/deficit	-3 040	-2 750	-5 790 <sup>P</sup>	-5 310 <sup>P</sup>
as % of requirement	-1.6	-1.5	-3.2 <sup>P</sup>	-3.0 <sup>P</sup>
<b>Naval service</b>				
Requirement	38 190	36 830	36 800	36 260
Strength	36 400	35 620	34 920	35 070 <sup>P</sup>
Surplus/deficit	-1 790	-1 220	-1 880	-1 190 <sup>P</sup>
as % of requirement	-4.7	-3.3	-5.1	-3.3 <sup>P</sup>
<b>Army</b>				
Requirement	104 170	101 800	101 800	101 800
Strength	102 440	100 620	99 350 <sup>P</sup>	98 270 <sup>P</sup>
Surplus/deficit	-1 730	-1 180	-2 450 <sup>P</sup>	-3 530 <sup>P</sup>
as % of requirement	-1.7	-1.2	-2.4 <sup>P</sup>	-3.5 <sup>P</sup>
<b>RAF</b>				
Requirement	48 730	47 290	45 020	41 210
Strength	49 210	46 940	43 550	40 620 <sup>P</sup>
Surplus/deficit	480	-350	-1 460	-590 <sup>P</sup>
as % of requirement	1.0	-0.7	-3.2	-1.4 <sup>P</sup>

Full-time trained strengths include Trained UK Regulars, Trained Gurkhas and FTRS.

## F 2.10 Ethnic Composition of Serving Members of the UK Regular Forces

	Percentage			Thousands
1 April 2008	White	Ethnic Minority	Unknown	Total
<b>All Services</b>	<b>87.8</b> <sup>P</sup>	<b>5.7</b> <sup>P</sup>	<b>6.5</b> <sup>P</sup>	<b>187.1</b> <sup>P</sup>
Officers	90.2 <sup>P</sup>	2.3 <sup>P</sup>	7.5 <sup>P</sup>	31.7 <sup>P</sup>
Other ranks	87.3 <sup>P</sup>	6.4 <sup>P</sup>	6.3 <sup>P</sup>	155.3 <sup>P</sup>
<b>Naval Service</b>	<b>92.5</b> <sup>P</sup>	<b>2.9</b> <sup>P</sup>	<b>4.6</b> <sup>P</sup>	<b>38.6</b> <sup>P</sup>
Officers	94.4 <sup>P</sup>	1.5 <sup>P</sup>	4.2 <sup>P</sup>	7.5 <sup>P</sup>
Other ranks	92.1 <sup>P</sup>	3.3 <sup>P</sup>	4.7 <sup>P</sup>	31.1 <sup>P</sup>
<b>Army</b>	<b>85.3</b> <sup>P</sup>	<b>8.2</b> <sup>P</sup>	<b>6.5</b> <sup>P</sup>	<b>105.1</b> <sup>P</sup>
Officers	90.8 <sup>P</sup>	2.8 <sup>P</sup>	6.4 <sup>P</sup>	14.6 <sup>P</sup>
Other ranks	84.4 <sup>P</sup>	9.1 <sup>P</sup>	6.5 <sup>P</sup>	90.5 <sup>P</sup>
<b>RAF</b>	<b>89.7</b> <sup>P</sup>	<b>2.0</b> <sup>P</sup>	<b>8.3</b> <sup>P</sup>	<b>43.4</b> <sup>P</sup>
Officers	86.1 <sup>P</sup>	2.1 <sup>P</sup>	11.7 <sup>P</sup>	9.7 <sup>P</sup>
Other ranks	90.8 <sup>P</sup>	2.0 <sup>P</sup>	7.3 <sup>P</sup>	33.7 <sup>P</sup>

## F 2.17/2.18 Strength of Reserve Forces and Cadets

	Thousands			
1 April	1997	2006	2007	2008
<b>All Services</b>	<b>322.1</b>	<b>-</b>	<b>-</b>	<b>-</b>
Regular Reserves	259.4	-	-	-
Volunteer Reserves	62.6	-	41.0 <sup>P</sup>	39.2 <sup>P</sup>
<b>Naval Service</b>	<b>27.7</b>	<b>-</b>	<b>-</b>	<b>22.5</b>
Regular Reserves	24.1	-	-	19.6
Volunteer Reserves	3.6	-	3.0	2.9
<b>Army</b>	<b>247.8</b>	<b>166.1</b>	<b>158.6</b>	<b>-</b>
Regular Reserves	190.1	127.6	121.8	-
Volunteer Reserves	57.7	38.5	36.8	35.0 <sup>P</sup>
<b>Royal Air Force</b>	<b>46.7</b>	<b>35.8</b>	<b>34.6</b> <sup>P</sup>	<b>-</b>
Regular Reserves	45.3	34.4	33.4 <sup>P</sup>	-
Volunteer Reserves	1.4	1.4	1.3 <sup>P</sup>	1.3 <sup>P</sup>
<b>All Services Cadets</b>	<b>127.5</b>	<b>-</b>	<b>127.4</b>	<b>127.6</b>

Source: DASA(Quad-Service), Single Services Reserve figures exclude FTRS, URNU and UAS personnel but include OTC and mobilised reservist personnel. Cadet figures exclude officers, training and administrative staff.

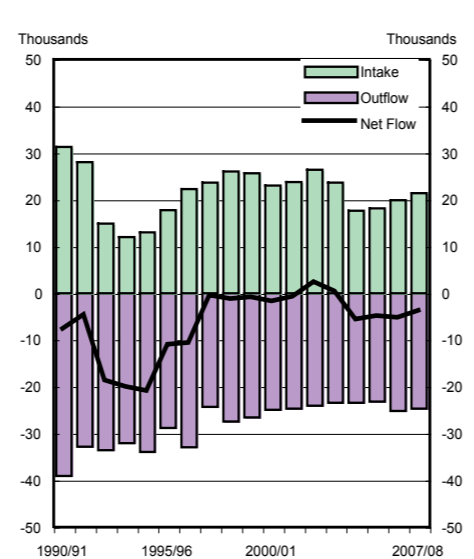
## F 2.19 Intake to UK Regular Forces from Civil Life by Service

	Number			
	97/98	05/06	06/07	07/08
<b>All Services</b>	<b>23 610</b>	<b>18 150</b>	<b>19 790</b> <sup>P</sup>	<b>21 330</b> <sup>P</sup>
Officers	1 760	1 520	1 580 <sup>P</sup>	1 740 <sup>P</sup>
Other Ranks	21 850	16 630	18 210 <sup>P</sup>	19 590 <sup>P</sup>
<b>Naval Service</b>	<b>4 600</b>	<b>3 940</b>	<b>3 770</b> <sup>P</sup>	<b>3 860</b> <sup>P</sup>
Officers	370	370	320 <sup>P</sup>	290 <sup>P</sup>
of which marines:	40	50	50 <sup>P</sup>	30 <sup>P</sup>
Other Ranks	4 230	3 570	3 450 <sup>P</sup>	3 580 <sup>P</sup>
of which marines:	980	1 190	1 080 <sup>P</sup>	1 080 <sup>P</sup>
<b>Army</b>	<b>15 480</b>	<b>12 730</b>	<b>14 300</b> <sup>P</sup>	<b>14 540</b> <sup>P</sup>
Officers	990	820	900 <sup>P</sup>	1 060 <sup>P</sup>
Other Ranks	14 500	11 910	13 400 <sup>P</sup>	13 480 <sup>P</sup>
<b>RAF</b>	<b>3 530</b>	<b>1 480</b>	<b>1 720</b> <sup>P</sup>	<b>2 930</b> <sup>P</sup>
Officers	400	330	370	390 <sup>P</sup>
Other Ranks	3 130	1 150	1 360	2 540 <sup>P</sup>

## F 2.23 Outflow from UK Regular Forces by Service

	Number			
	97/98	05/06	06/07	07/08
<b>All Services</b>	<b>24 350</b>	<b>23 260</b>	<b>25 160</b> <sup>PP</sup>	<b>24 690</b> <sup>P</sup>
Officers	2 280	2 290	2 680 <sup>P</sup>	2 820 <sup>P</sup>
Other Ranks	22 070	20 980	22 480 <sup>PP</sup>	21 860 <sup>P</sup>
<b>Naval Service</b>	<b>5 270</b>	<b>4 490</b>	<b>4 320</b> <sup>P</sup>	<b>4 340</b> <sup>P</sup>
Officers	620	520	500 <sup>P</sup>	580 <sup>P</sup>
Other Ranks	4 650	3 960	3 820 <sup>P</sup>	3 760 <sup>P</sup>
<b>Army</b>	<b>14 470</b>	<b>14 190</b>	<b>15 770</b> <sup>P</sup>	<b>15 330</b> <sup>P</sup>
Officers	1 040	1 070	1 330 <sup>P</sup>	1 490 <sup>P</sup>
Other Ranks	13 430	13 120	14 440 <sup>P</sup>	13 830 <sup>P</sup>
<b>RAF</b>	<b>4 610</b>	<b>4 590</b>	<b>5 070</b> <sup>P</sup>	<b>5 020</b> <sup>P</sup>
Officers	620	700	850	760 <sup>P</sup>
Other Ranks	3 990	3 890	4 220	4 270 <sup>P</sup>

## F 2.19 / 2.23 Intake and Outflow of UK Regular Forces



## F 2.27 Indices and Illustrative Rates of Military Salary

	06/07	07/08	08/09
(1990/91)=100			
<b>Military salaries Index<sup>1</sup>:</b>	<b>205</b>	<b>213</b>	<b>221</b>
<b>Illustrative rates</b>			
M. General and above	208	214	221
Brigadier and below	201	208	217
Sergeant and above	212	219	227
Corporal and below	204	212	219
<b>£</b>			
General	152,728	160,625	164,159
Brigadier	86,527	89,444	96,288
Colonel	69,189	71,522	77,545
Lieutenant Colonel	66,047	68,273	74,023
Major	50,983	52,702	54,551
Captain	35,617	36,817	38,109
Lieutenant	27,762	28,698	29,704
2nd Lieutenant	21,940	22,680	23,475
Warrant Officer I	41,672	43,077	44,588
Warrant Officer II	38,551	39,851	41,249
Staff Sergeant	34,098	35,248	36,484
Sergeant	32,916	34,025	35,219
Corporal	29,576	30,573	31,646
Lance Corporal	25,794	26,664	27,599
Private	14,323	15,677	16,227

1. Indices are based on average daily rates of pay during the year. All indices are calculated using standard rank weights taken at 1 March 2008. These have been updated since the previous UKDS (2007), which used rank weights taken at 1 May 2005.

## F 4.5 Operational RN and Royal Fleet Auxiliary ships

1 April 2008	Operational			Undergoing Refit	Total
<b>Royal Navy ships</b>					
Aircraft Carriers	2	-	-	2	
Landing Platform Dock	2	-	-	2	
Landing Platform Helicopter	-	-	1	1	
<b>Destroyers</b>					
Type 42	7	-	1	8	
<b>Frigates</b>					
Type 23	6	1	-	7	
Devonport	5	1	-	6	
Portsmouth	4	-	-	4	
<b>Offshore patrol</b>					
River class	4	-	-	4	
Castle class	-	-	-	-	
<b>Mine countermeasures vessels</b>					
Hunt class	-	-	-	-	
Faslane	8	-	-	8	
Portsmouth	8	-	-	8	
Sandown class	8	-	-	8	
Faslane	-	-	-	-	
Portsmouth	-	-	-	-	
<b>Patrol craft</b>	17	1	-	18	
<b>Survey ships</b>	5	-	-	5	
<b>Ice patrol ships</b>	1	-	-	1	